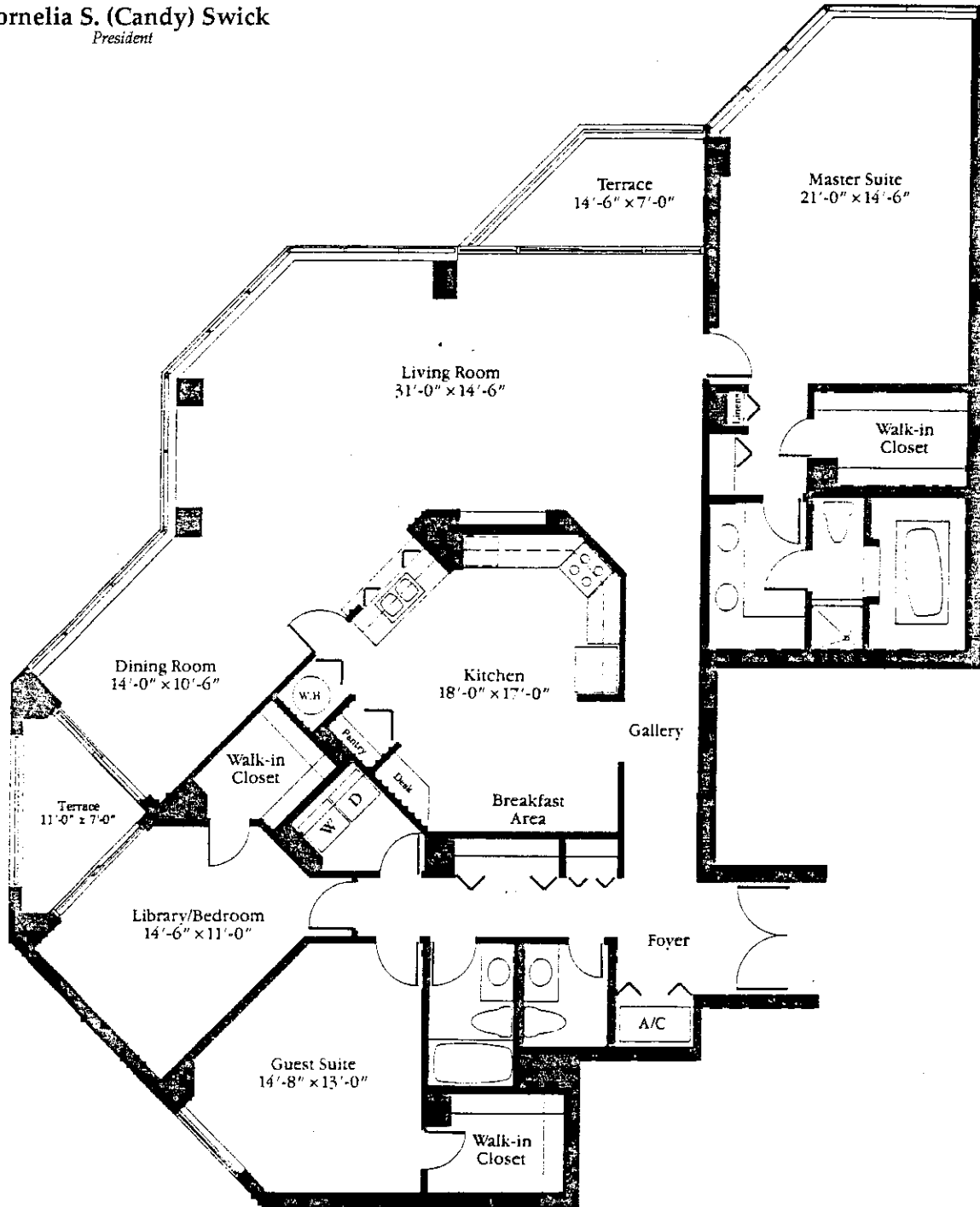




Candy Swick & Company

Licensed Real Estate Broker

Cornelia S. (Candy) Swick
President



Rembrandt – 3 Bedroom Split Plan
Corner Residence with 2½ Baths. Size:
2460 square feet / 228.54 square meters. Air
Conditioned: 2315 square feet / 215.07 square meters

All dimensions and areas shown are based on drawings and may not strictly conform to actual dimensions and areas. Dimensions and areas from unit to unit are subject to small variations.


Renoir

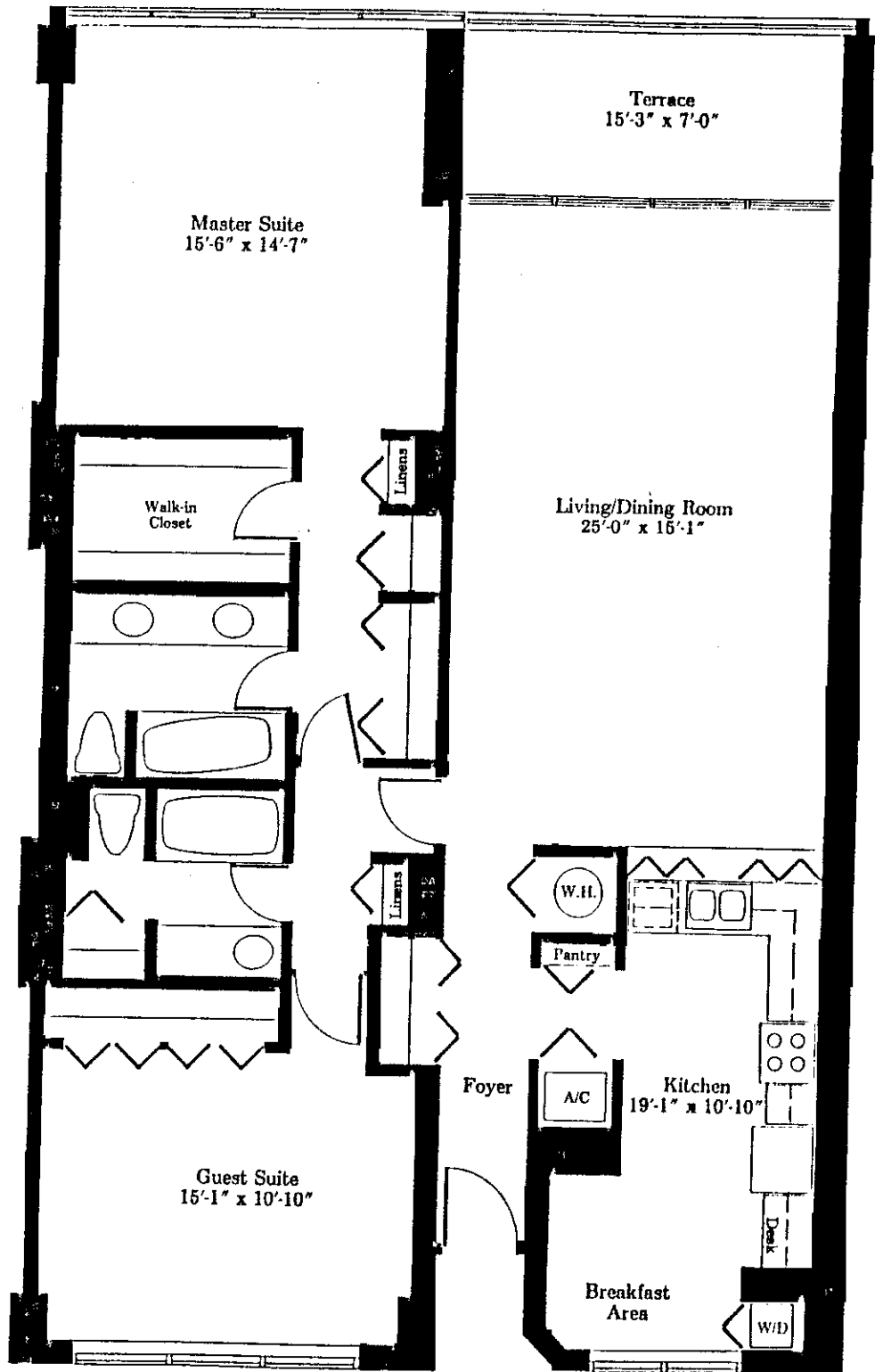
2 Bedroom Residence with 2 Baths

Size: 1656 square feet / 153.84 square meters

Air Conditioned: 1555 square feet / 144.46 square meters

Terrace: 101 square feet / 9.38 square meters

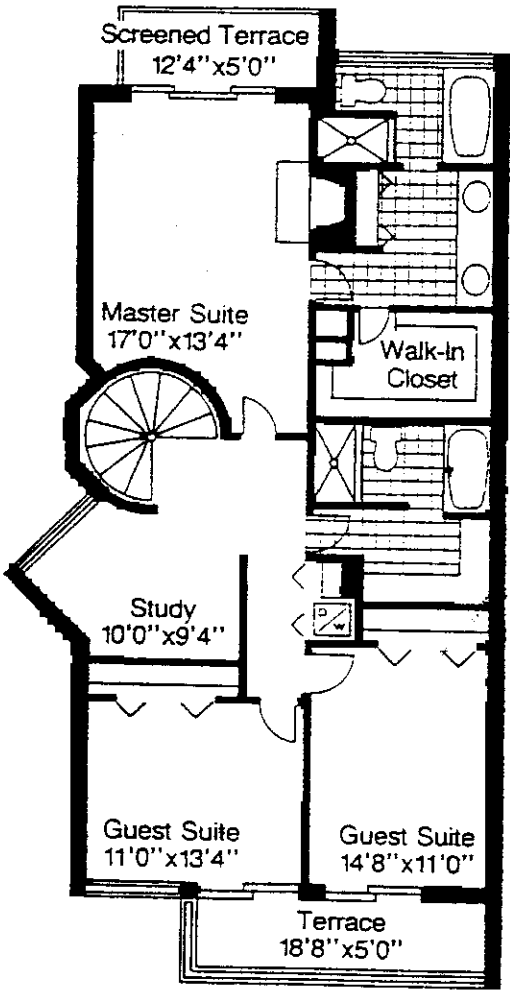

Candy Swick & Company
Licensed Real Estate Broker
Cornelia S. (Candy) Swick
President



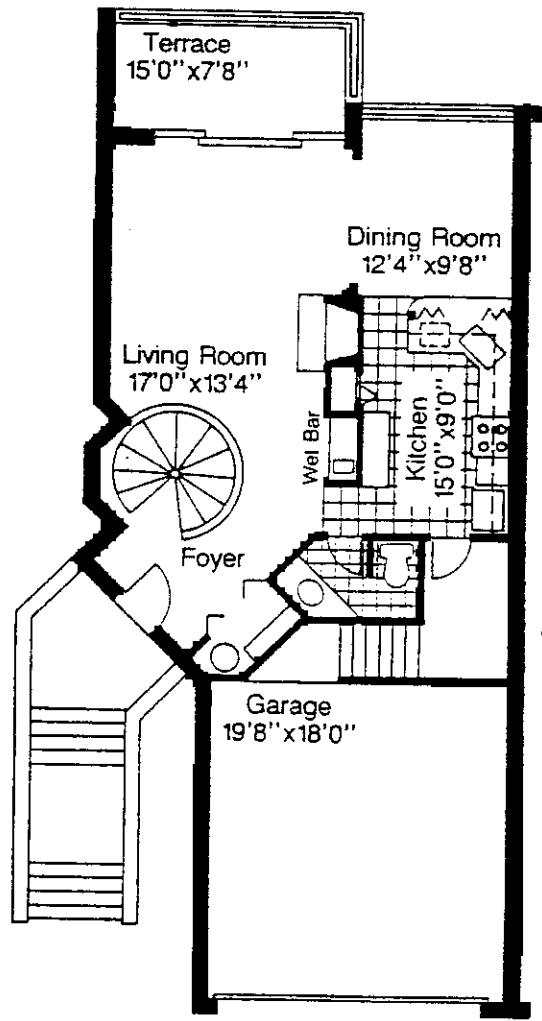
Chopin

MARINA

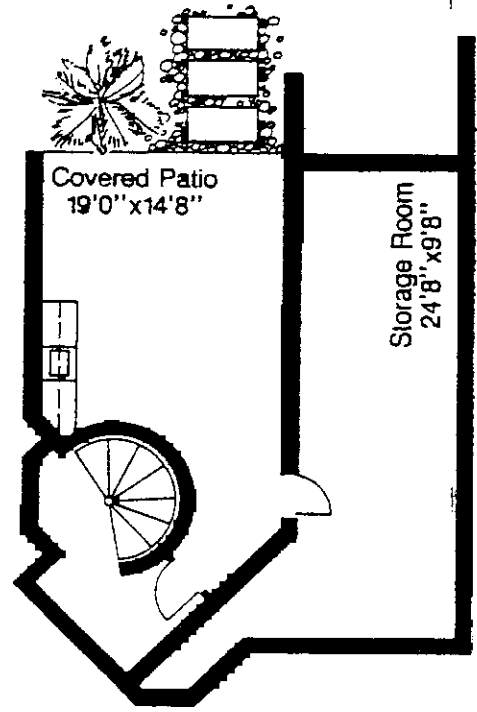
m/s



SECOND LEVEL



ENTRY LEVEL



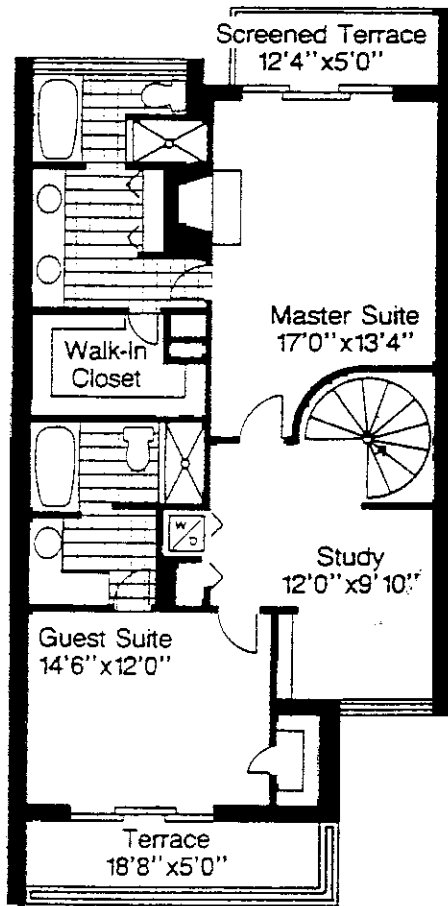
LOWER LEVEL

Dimensions and square footage may vary due to field variations.

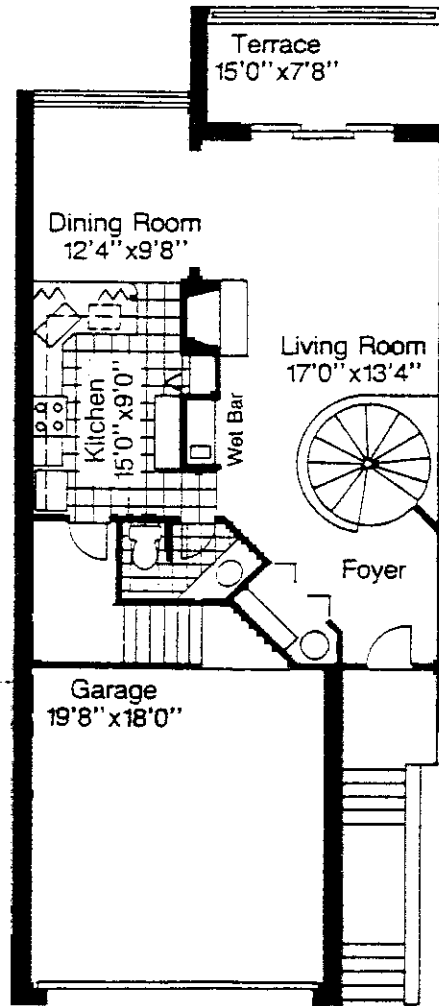
Mozart

MARINA

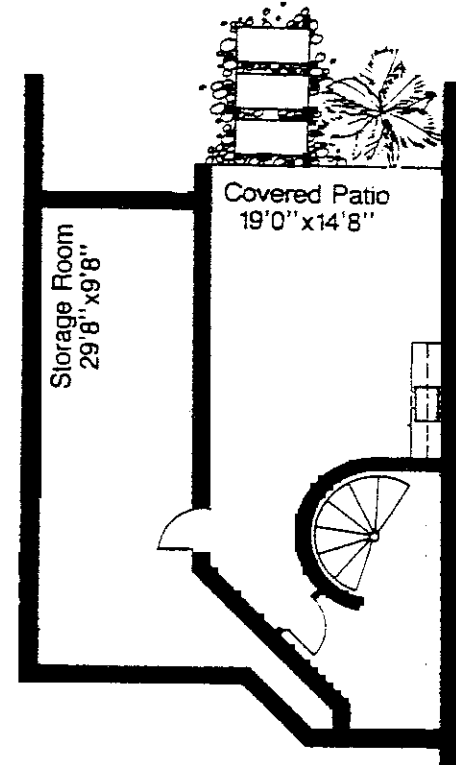
m/s



SECOND LEVEL

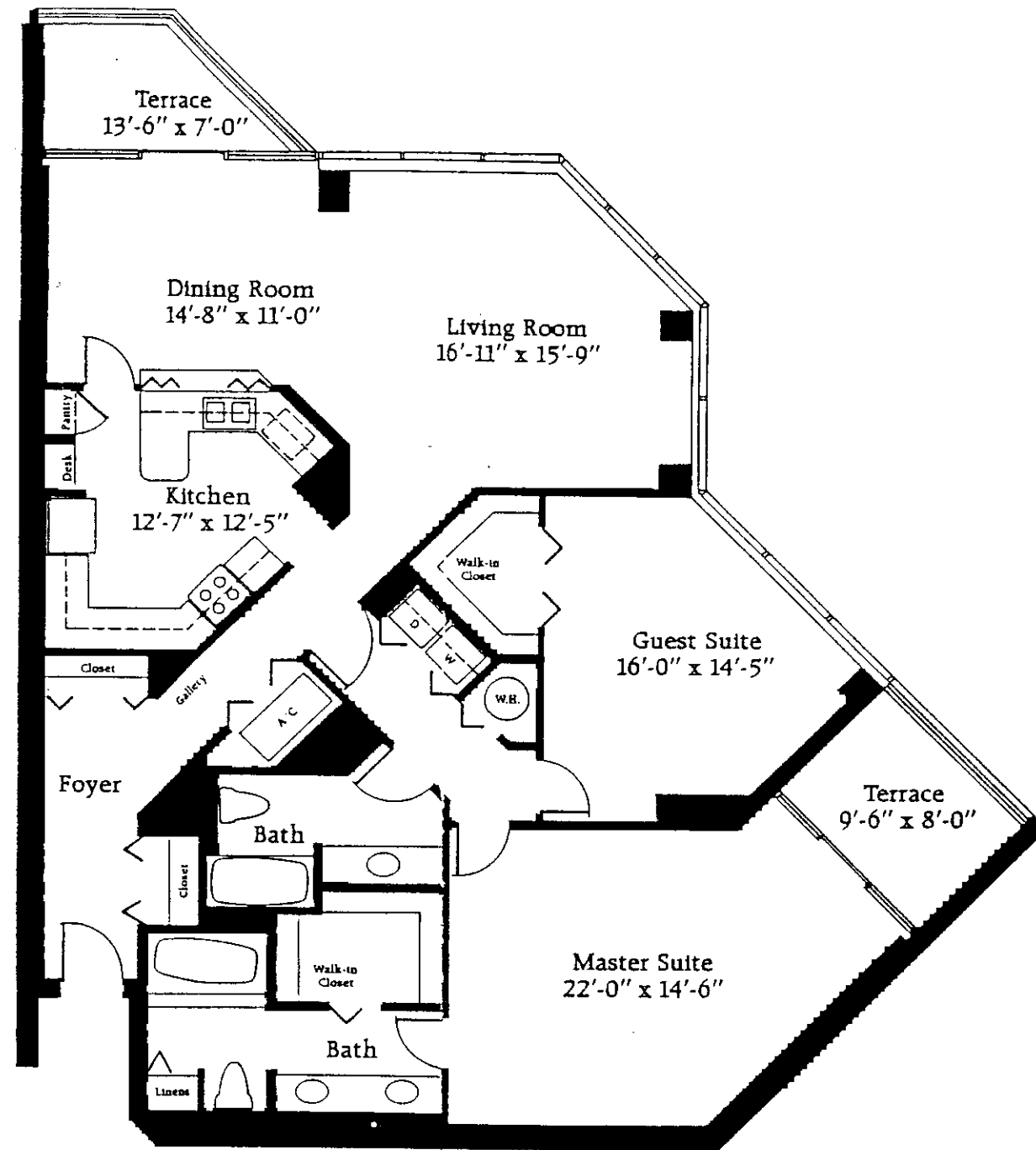


LOWER LEVEL



ENTRY LEVEL

Dimensions and square footage may vary due to field variations.




Candy Swick & Company
 Licensed Real Estate Broker
 Cornelia S. (Candy) Swick
 President

VAN GOGH

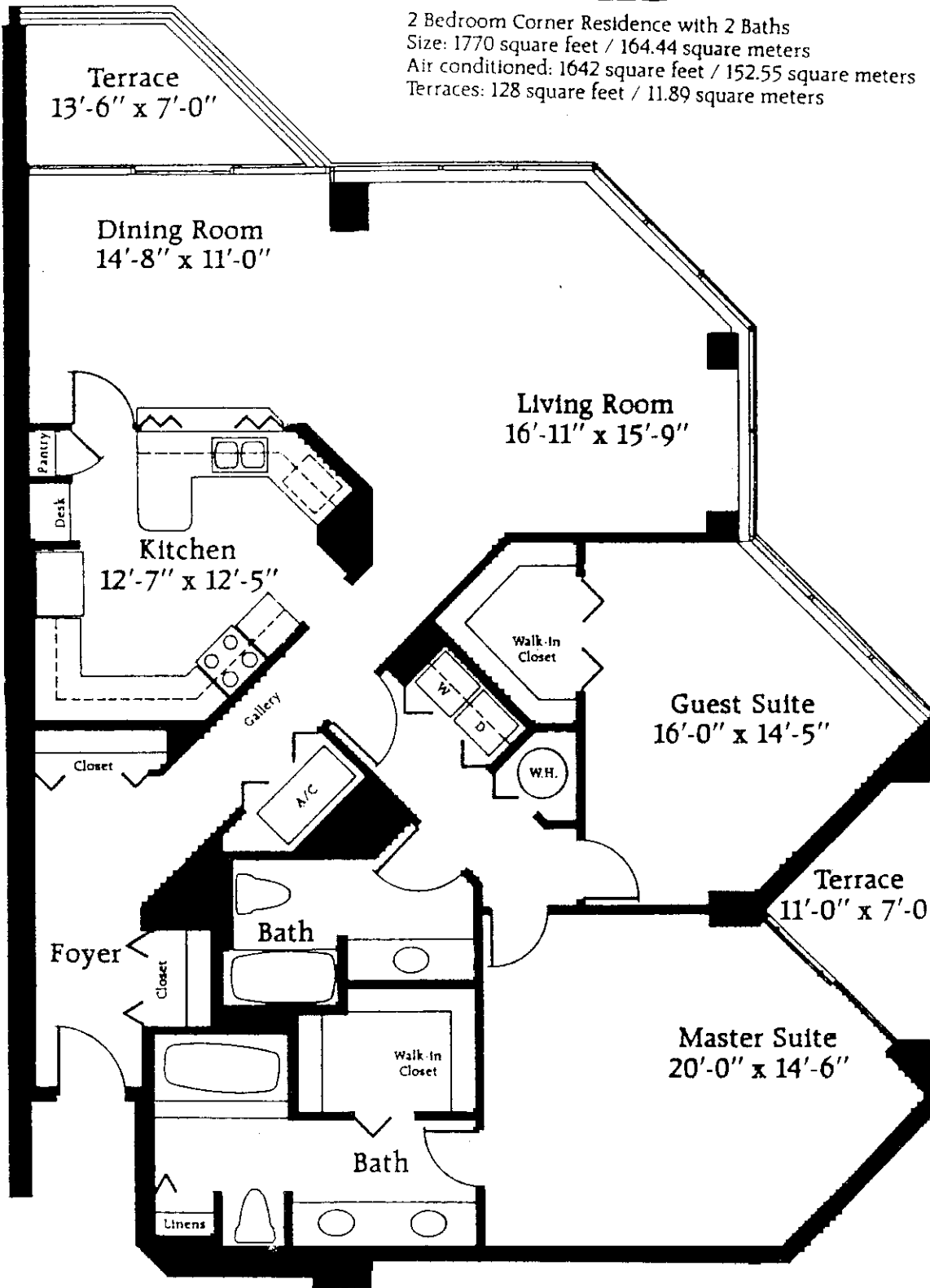
2 Bedroom Corner Residence with 2 Baths

Size: 1876 Square Feet/174.29 Square Meters

Air Conditioned: 1729 Square Feet/160.63 Square Meters

Cézanne

2 Bedroom Corner Residence with 2 Baths
Size: 1770 square feet / 164.44 square meters
Air conditioned: 1642 square feet / 152.55 square meters
Terraces: 128 square feet / 11.89 square meters



Candy Swick & Company

Licensed Real Estate Broker

Cornelia S. (Candy) Swick

President

Monet

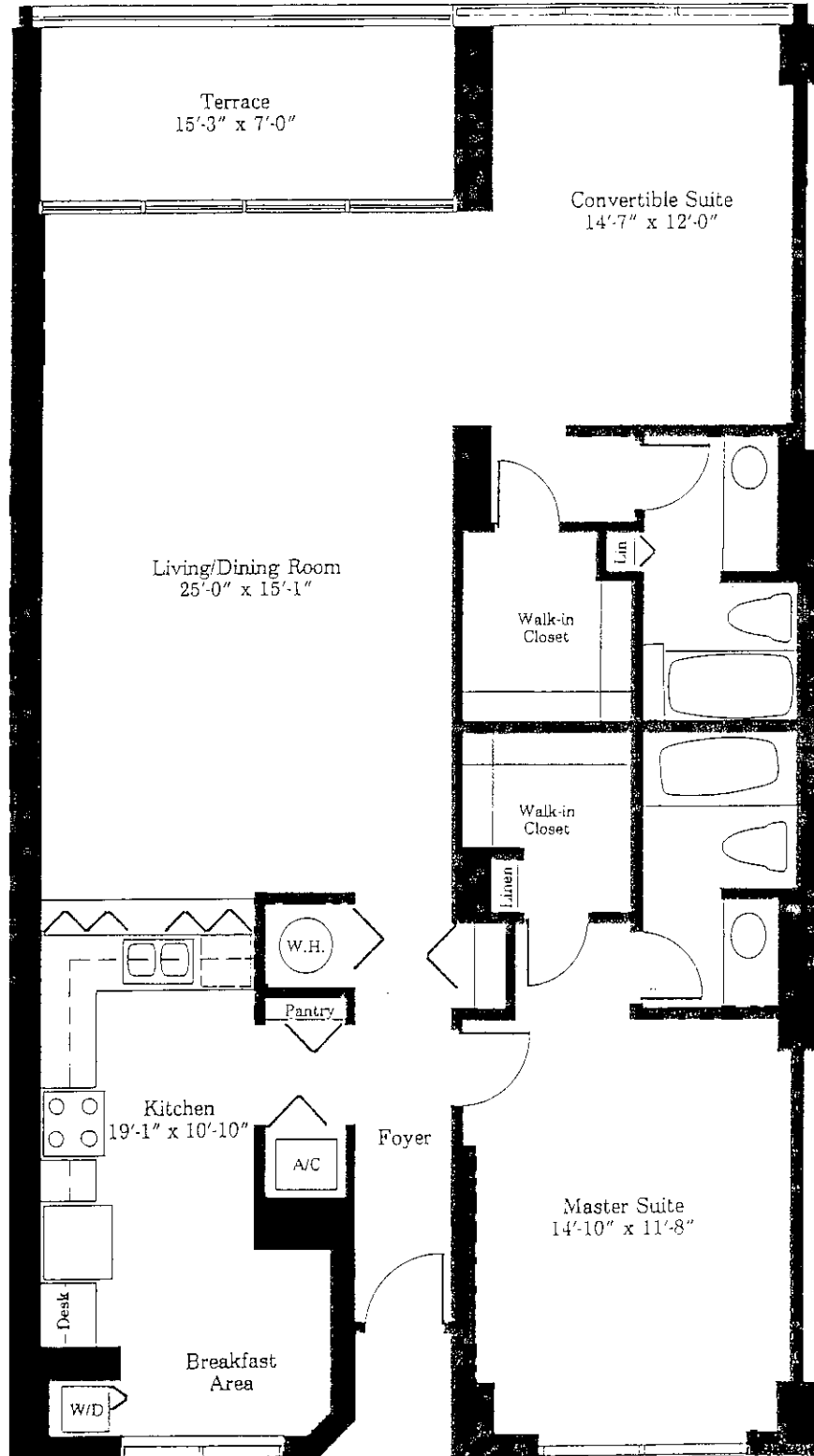
2 Bedroom Convertible Residence with 2 Baths
Size: 1389 square feet / 129.04 square meters
Air conditioned: 1288 square feet / 119.66 square meters
Terrace: 101 square feet / 9.38 square meters



Candy Swick & Company

Licensed Real Estate Broker

Cornelia S. (Candy) Swick
President



Dimensions are approximate. Plans are subject to architectural, structural, and other revisions without notice, as some are deemed advisable by the developer, builder or architect, or as same may be required by law.